

Make a Map

1) Go to the SDM home page, and scroll down to the map image below.



2) Start the interactive map by clicking on the map image to open the Interactive base map for SDM.

You may also select an individual district Interactive map. (**Klerksdorp, Maquassi Hills, Potchefstroom or Ventersdorp**)

3) Locate your “Area of Interest” by using the map tools (zooming, panning etc)

	Zoom in	Zooms in by clicking on or dragging a box on the map
	Zoom out	Zooms out by clicking on or dragging a box on the map
	Zoom to full extent	Zooms to full extent of the map
	Zoom to active layer	Zooms to the extent of the Active Layer
	Zoom to last extent	Shows previous map image
	Pan	Pans as the user drags the pointer across the map
	Print	Prints the map

4) Decide what data layers must be visible by using the “LAYERS” functionality.
Click on the gray square blocks , , to change visibility.



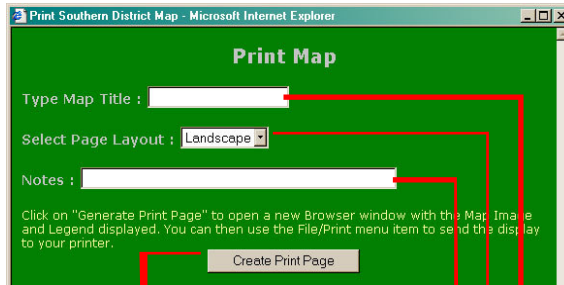
This layer is visible

- When a layer is not “ticked” it means the layer is not visible on the map.
- When a layer is “ticked” it means that layer is visible on the map
- means the layer is visible, but not at the current zoom level.

4) Click on the print button map tool.



Complete the dialog box, and press the "Create Print Page" button



Click here to create the print page

Make notes

Give the map a name
Select which layout the map should be printed in.
(Landscape or portrait)

5) A new window will open. Choose "File" and then "Print" from the menu bar. Then press print.

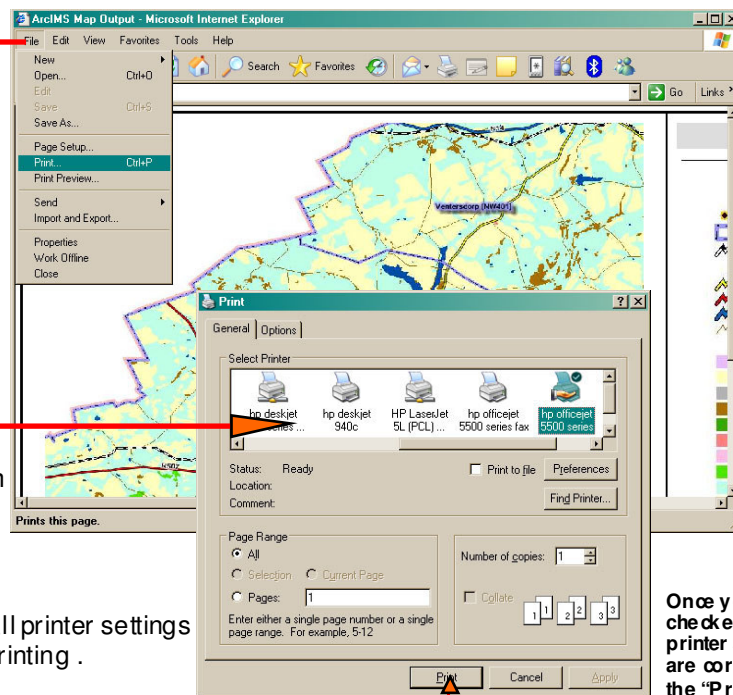
This is the window that will appear

Click on File, then go down to Print.

You will see a "Print" window appear.

Select a printer from the list and press print.

NOTE: Make sure all printer settings are correct before printing .



Once you have checked a ll the printer settings are correct, press the "Print" button